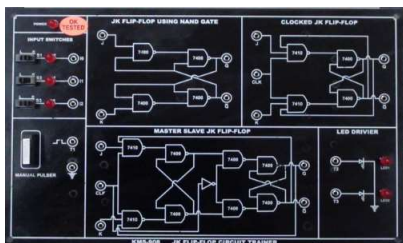


KMS-908

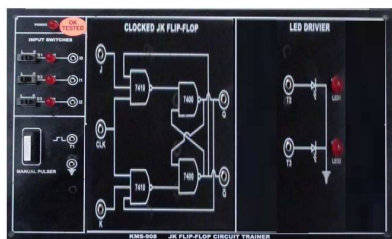
JK FLIP FLOP CIRCUIT TRAINER



- One LED indicator to indicate Power input.
- Three Input Switches to facilitate change of state from High to Low and Vice-versa, status indicated through LEDs provided.
- LED Driver consist of two LEDs to indicate output status.
- One Manual Pulser Provided.
- On-board Circuits
 - ~ JK Flip Flop using NAND Gate
 - ~ Clocked JK Flip Flop
 - ~ Master Slave (MS) JK Flip Flop
- Supply connections to the Circuit is internally provided.
- All interconnections are made using 2mm banana Patch cords.
- Bare board Tested Glass Epoxy PCB is used.
- Set of 2mm Patch cords for interconnections.
- Attractive ABS Plastic enclosure.
- User Manual.

KMS-908T

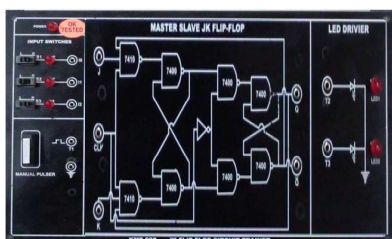
T FLIP FLOP USING JK FLIP FLOP TRAINER



- One LED indicator to indicate Power input.
- Three Input Switches to facilitate change of state from High to Low and Vice-versa, status indicated through LEDs provided.
- LED Driver consist of two LEDs to indicate output status.
- One Manual Pulser Provided.
- On-board Circuit
 - ~ Clocked JK Flip Flop
- Supply connections to the Circuit is internally provided.
- All interconnections are made using 2mm banana Patch cords.
- Bare board Tested Glass Epoxy PCB is used.
- Set of 2mm Patch cords for interconnections.
- Attractive ABS Plastic enclosure.
- User Manual.

KMS-908MS

MASTER SLAVE JK FLIP FLOP TRAINER



- One LED indicator to indicate Power input.
- Three Input Switches to facilitate change of state from High to Low and Vice-versa, status indicated through LEDs provided.
- LED Driver consist of two LEDs to indicate output status.
- One Manual Pulser Provided.
- On-board Circuit
 - ~ Master Slave (MS) JK Flip Flop
- Supply connections to the Circuit is internally provided.
- All interconnections are made using 2mm banana Patch cords.
- Bare board Tested Glass Epoxy PCB is used.
- Set of 2mm Patch cords for interconnections.
- Attractive ABS Plastic enclosure.
- User Manual.

Note: Photos are only indicative and are subject to change with specifications. Specifications and Photos can be altered without prior notice in our constant efforts for improvement.

